



RoHS Compliant

Specifications

| | |
|--------------------|---|
| Electrical Ratings | 3A @ 120VAC, 28VDC 1A @ 250VAC See Contract Options |
| Electrical Life | 50,000 cycles typical |
| Contact Resistance | <20mΩ initial @ 2-4VDC, 100mA |

| | |
|-----------------------|---------------|
| Dielectric Strength | 1500Vrms min |
| Insulation Resistance | >100MΩ min |
| Operating Temperature | -40°C to 85°C |
| Storage Temperature | -40°C to 85°C |

Materials

| | |
|-----------|-----------------------------|
| Actuator | Thermoplastic Polyester |
| Housing | Diallyl Phthalate (DAP) |
| Cover | Stainless Steel |
| Bushing | Brass, Nickel Plated |
| Contacts | Cooper Alloy, Silver Plated |
| Terminals | Brass, Silver Plated |

Ordering Information

| | | | | | | | |
|---|-----|---|---|---|--|---|---|
| 1. Series | BNP | 1 | 1 | S | C | Q | E |
| BNP | | | | | | | |
| 2. Number of Poles 1 = SPST | | | | | | | |
| 3. Switch Function 0 = OFF - (ON) For SPST Only 1 = ON - (ON) For SPDT Only | | | | | | | |
| 4. Bushing Blank = Panel Mount Frame S / U = 5.59mm, 10-48UNS / Non-threaded, flat T = 5.59mm, Non-threaded, round V / V1 = 7.87mm, ¼-40NS / Non-threaded, flat S9 = 3.20mm, Actuator only | | | | | | | |
| 5. Terminals B = Solder Lug C = PC pin H = Horizontal mount, right angle PC pin; HS = Snap in V = Vertical mount, right angle PC pin; VS = Snap in A5 = PC pin with support bracket; A5S = Snap in support bracket | | | | | | | |
| 6. Contacts Q = Silver plated R = Gold plated G = Gold over Silver plated | | | | | | | |
| 7. Epoxy Seal E = Epoxy Seal | | | | | | | |
| 8. Cap / Frame C84 C85 C87 Only used with V & V1 bushings F86 = Snap in panel mount with frame | | | | | | | |
| | | | | | Actuator Cap / Frame Colors | | |
| | | | | | See cap options for color availability | | |

BNP

Sub-Miniature Pushbutton

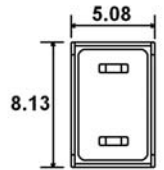
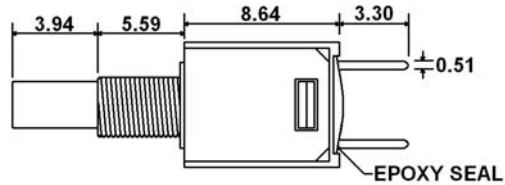
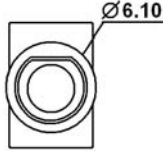
Switch Function



SPST



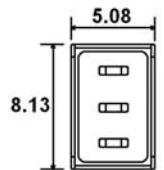
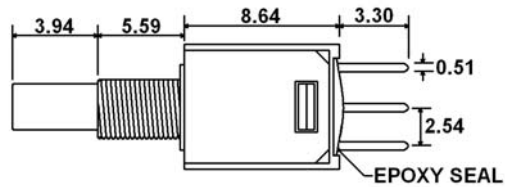
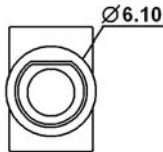
| Function | Pushbutton Position | |
|-----------|---------------------|------|
| | | |
| 1 | OFF | (ON) |
| Terminals | -- | 1-3 |



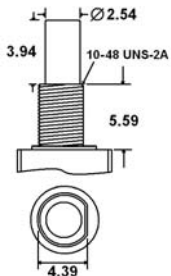
SPDT



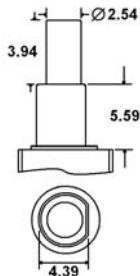
| Function | Pushbutton Position | |
|-----------|---------------------|------|
| | | |
| 1 | ON | (ON) |
| Terminals | 2-1 | 2-3 |



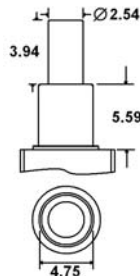
Bushing Options



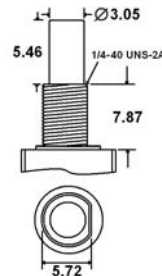
S



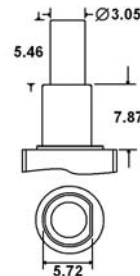
U



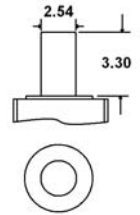
T



V

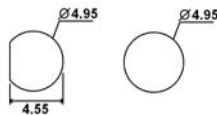


V1

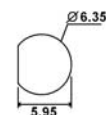


SP

Panel Mounting

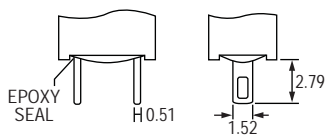


Used with S, U & T Bushings

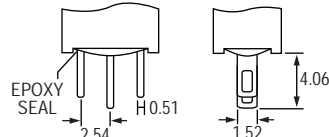


Used with V & V1 Bushings

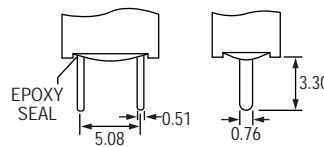
Terminal Options



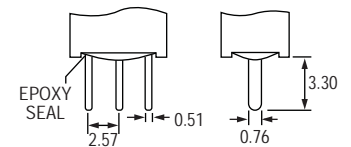
B - SPST



B - SPDT

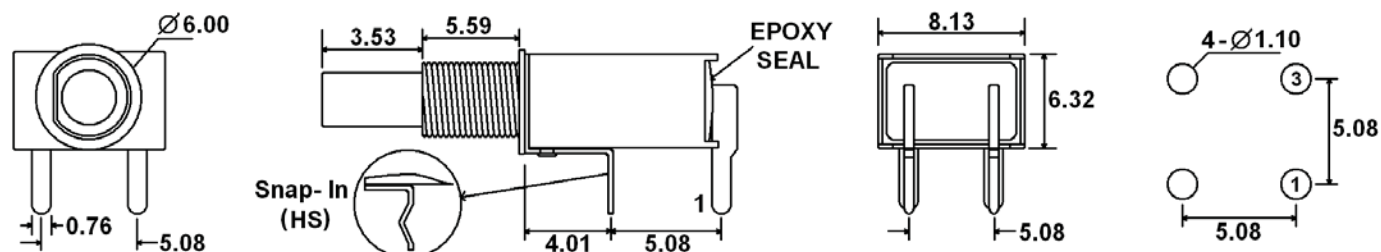


C - SPST

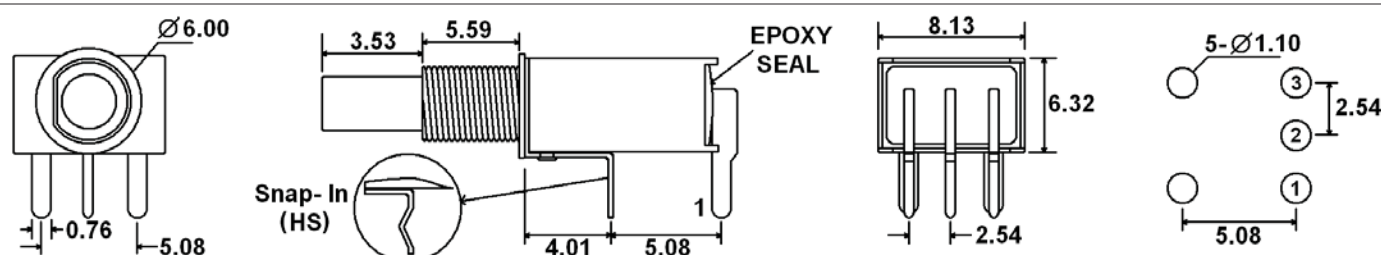


C - SPDT

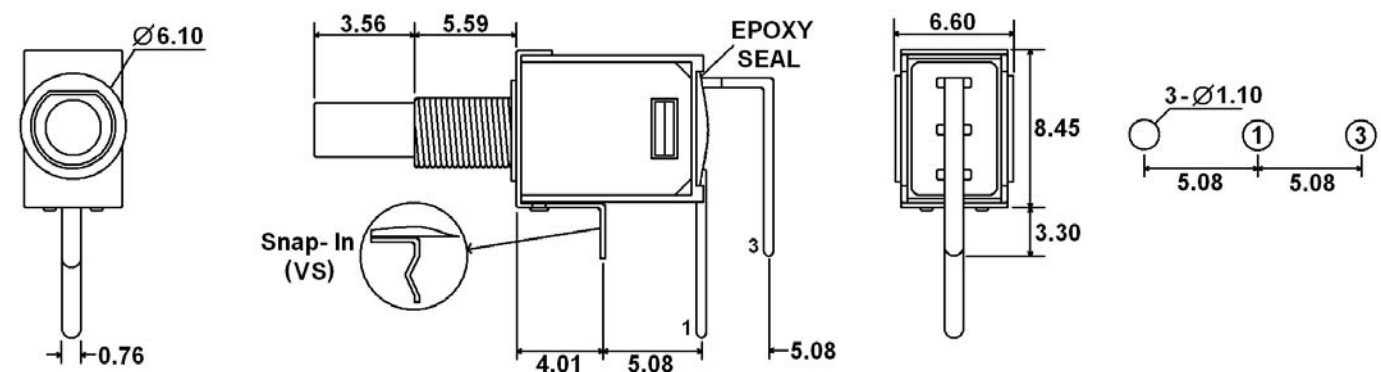
Terminal Options



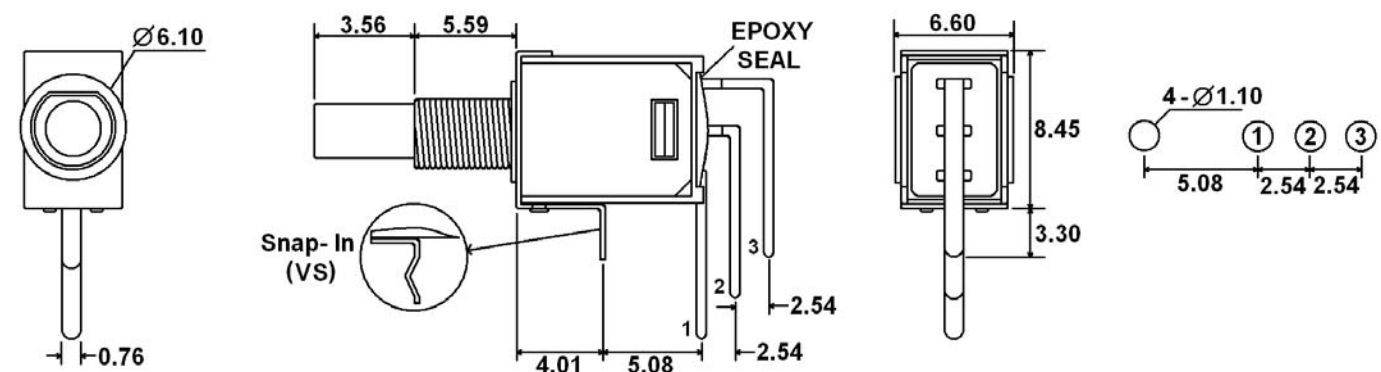
H (HS - Snap In) = Horizontal mount, right angle PC pins, single pole, single throw



H (HS - Snap In) = Horizontal mount, right angle PC pins, single pole, double throw



V (VS - Snap In) = Vertical mount, right angle PC pins, single pole, single throw

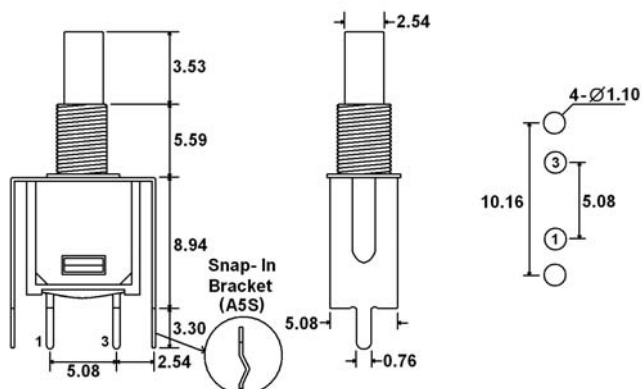


V (VS - Snap In) = Vertical mount, right angle PC pins, single pole, double throw

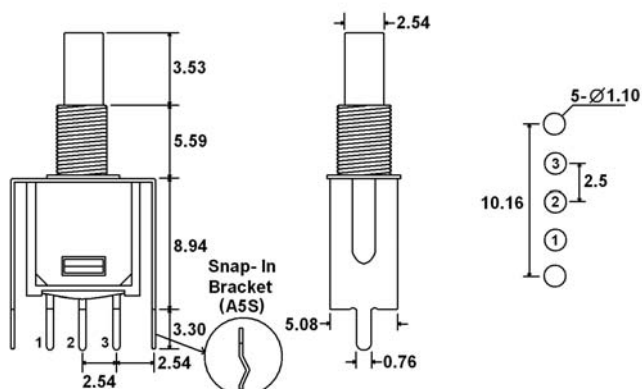
BNP

Sub-Miniature Pushbutton

Terminal Options



A5 (A5S - Snap in bracket) = PC pins with support bracket, single pole single throw

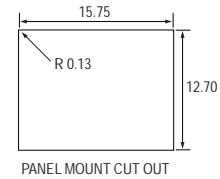
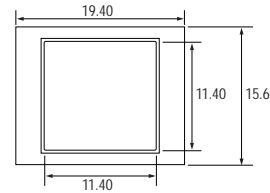
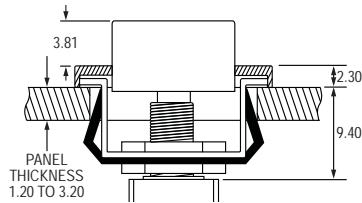


A5 (A5S - Snap in bracket) = PC pins with support bracket, single pole double throw

Contact Options

| Designator | Contact Material | Terminal Material | Electrical Ratings |
|------------|--------------------------|--------------------------|--|
| Q | Silver Plating | Silver Plating | 3A @ 120VAC, 28VDC; 1A @ 250VAC |
| R | Gold over Nickel Plating | Gold over Nickel Plating | 0.4VA max @ 20VAC or VDC max |
| G | Gold over Silver Plating | Gold over Silver Plating | 0.4VA max @ 20VAC or VDC max or 3A @ 120VAC, 28VDC; 1A @ 250VAC |

Frame Options



F86_ _ ← Insert cap and frame colors here

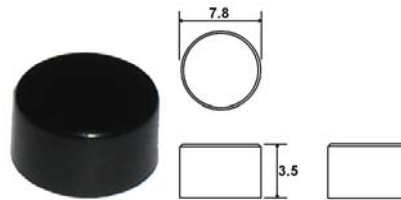
Cap Color / Frame Color
1 = White, 2 = Black, 3 = Red
Contact Factory for other available colors

Cap Options



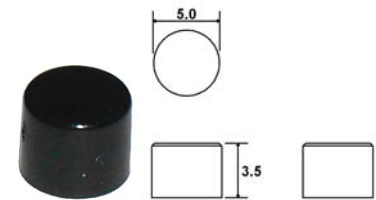
C84_

1 = White, 2 = Black, 3 = Red
Contact Factory for other available colors



C85_

1 = White, 2 = Black, 3 = Red
Contact Factory for other available colors

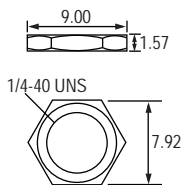


C87_

1 = White, 2 = Black, 3 = Red
Contact Factory for other available colors
Only for use with V & V1 Bushings

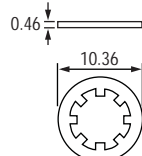
Hardware

Two hex nuts, one lock washer & one locking ring supplied standard with threaded bushings



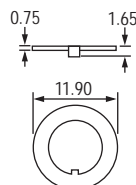
Hex Nut

For use with S & V
Bushing



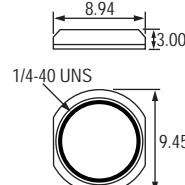
Lock Washer

For use with S & V
Bushing



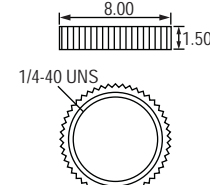
Locking Ring

For use with S & V
Bushing



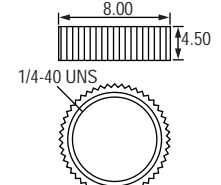
Dress Nut

For use with V Bushing



Knurled Nut

For use with V Bushing



Knurled Nut

For use with V Bushing